

STANDARD FEATURES

- Cooking capacity for up to six 12"x20"x2.5" deep steam table pans
- 304 Stainless Steel interior and exterior construction
- **Mirrored and #4 brushed interior finish**
- **Steam flow directed over each pan from both left and right side of cooking chamber for more even cooking**
- **Hold Mode with adjustable thermostat**
- **Heavy duty refrigeration style door handle with magnetic latch**
- **60 minute timer with continuous cook and hold mode features**
- **60,000 BTU/hr high-efficiency powered infrared burner with boilerless design requiring no scheduled de-liming**
- Controls include options for both batch and à la carte cooking modes
- One year Parts and Labor Warranty included

OPTIONS

- Extended Parts and Labor Warranty up to 5 years
- Automatic water fill controls, fills when main power is turned ON. Low and High water probes located inside cooking chamber maintain water level during cooking, eliminating the need to manually maintain water level. High Water Indicating Light and Buzzer included.**

ACCESSORIES (SOLD SEPERATELY)

- Single unit stand with standard adjustable bullet feet
- Single unit stand with casters
- Double unit stand with standard adjustable bullet feet
- Double unit stand with casters
- 4" drain pan (standard 4" steam table pan), not for use on double-stack units
- Gas Quick-Disconnect Kit (required on stands with casters)

EXTERIOR DIMENSIONS:
23"w x 30"d x 32.5"h.

STERLING SPG6

6-PAN HIGH EFFICIENCY BOILERLESS CONVECTION STEAMER



SPECIFICATIONS

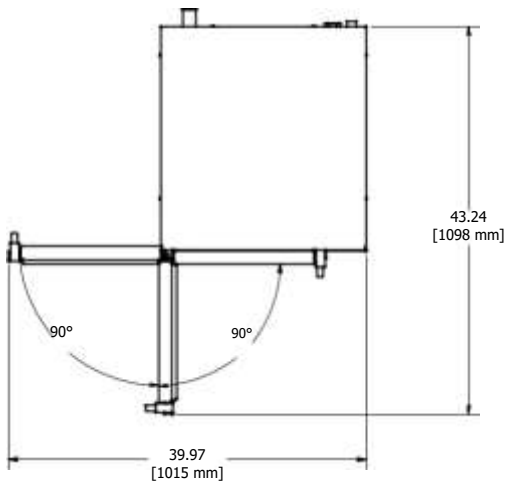
Single compartment connectionless steamer with capacity for 6 full size 2.5 inch or 4 full size 4 inch steam table pans. Controls include adjustable hold thermostat with thermometer, 60 minute manual timer with settings for timed or continuous cook and a 2 position switch for batch or à la carte cooking. Dual steam impingement system for directing convection steam evenly over each pan from both sides. Mirror finish interior sides. Heavy duty 14 gauge cooking compartment and exterior door. Four inch adjustable legs included.

GAS: 1/2" NPT, 60,000 BTU/hr, Natural - 5.00" WC min., 14.00" WC max., Propane - 10.00" WC min., 14.00" max.

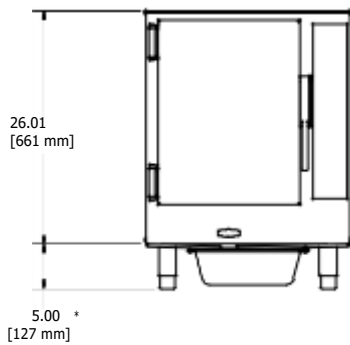
ELECTRICAL: 115VAC, 60Hz, 1 phase, 5 Amp

Manufacturer must be notified if installed above 2,000 ft. altitude.

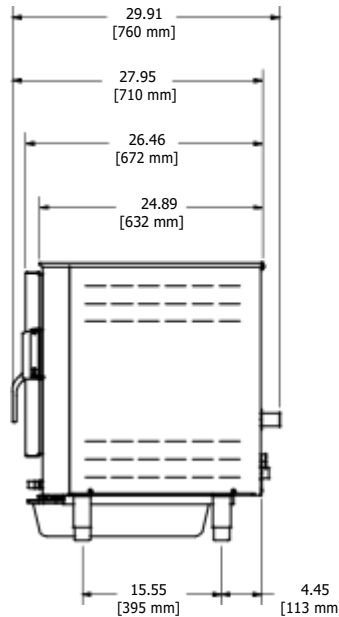
**6-PAN HIGH EFFICIENCY BOILERLESS
CONVECTION STEAMER**



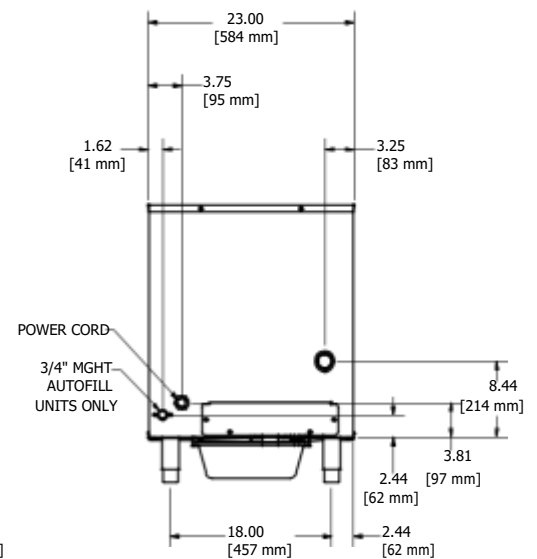
TOP VIEW



FRONT VIEW



RIGHT SIDE VIEW



REAR VIEW

* Legs adjust from 4" - 6" (102 - 152mm)

Model Number	Volt/Hz/ Plug	Phase Amps	kW	NEMA
<i>Steam BBQ™ Counter Top 208V Electric</i>				
SP208-6-1-AF	208/60/1	6.23	L6-30P	29.95
SP208-10-1-AF	208/60/1	10.0	6-50P	48.08
SP208-10-3-AF	208/60/3	10.0	L15-30P	27.76
SP208-14-3-AF	208/60/3	14.4	15-50P	39.97
<i>Steam BBQ™ Counter Top 240V Electric</i>				
SP240-6-1-AF	240/60/1	6.23	L6-30P	25.96
SP240-10-1-AF	240/60/1	10.0	6-50P	41.67
SP240-10-3-AF	240/60/3	10.0	L15-30P	24.06
SP240-14-3-AF	240/60/3	14.4	15-50P	34.64

Model Number	Volt/Hz/ Phase Amps	kW	NEMA	Plug
<i>Steam BBQ™ Counter Top 208V Electric</i>				
SP208-6-1-MF	208/60/1	6.23	L6-30P	29.95
SP208-10-1-MF	208/60/1	10.0	6-50P	48.08
SP208-10-3-MF	208/60/3	10.0	L15-30P	27.76
SP208-14-3-MF	208/60/3	14.4	15-50P	39.97
<i>Steam BBQ™ Counter Top 240V Electric</i>				
SP240-6-1-MF	240/60/1	6.23	L6-30P	25.96
SP240-10-1-MF	240/60/1	10.0	6-50P	41.67
SP240-10-3-MF	240/60/3	10.0	L15-30P	24.06
SP240-14-3-MF	240/60/3	14.4	15-50P	34.64

WATER SUPPLY

Feed water for reservoir: 10 - 60 PSI, 32 - 175 ° F, 3/4" MGHT, Use NSF approved hose.

EQUIPMENT CLEARANCE

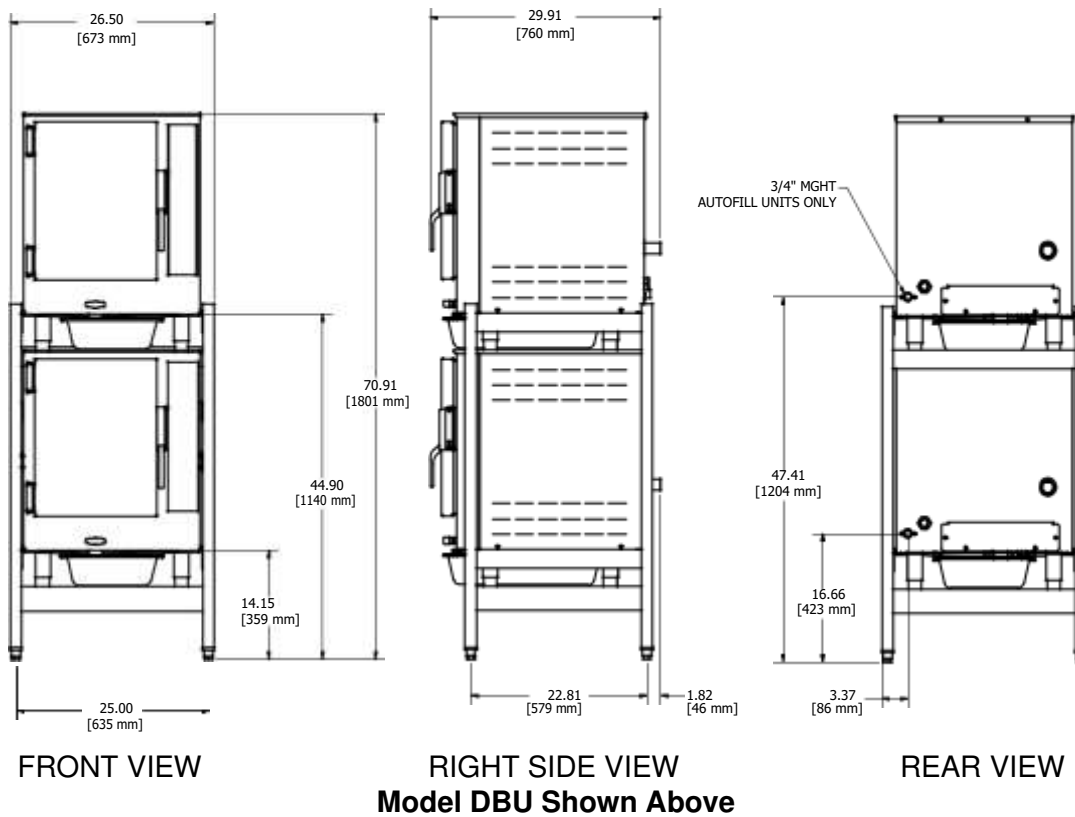
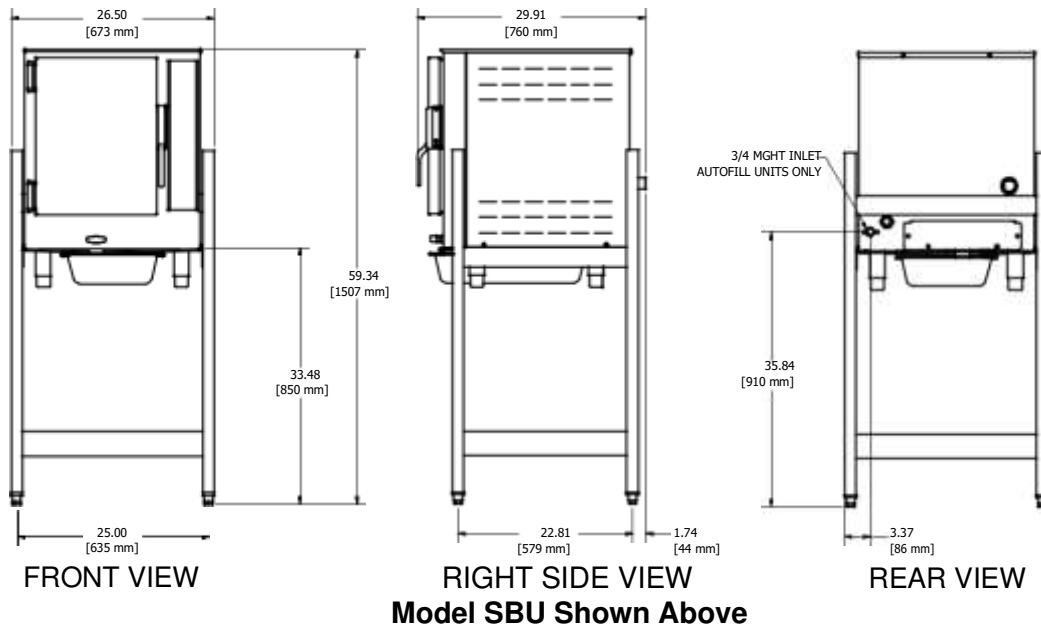
3" - Left, 3" - Right and 4" - Rear.

CAPACITY

Compartment holds: six 12"x 20"x 2.5" or four 12"x 20"x 4" Steam Table Pans.

NOTE:

- It is the responsibility of the owner and installer to comply with local codes for installation.
- This appliance is manufactured for commercial installation only and is not intended for household use.



Note: Dimensions do not change for variations in Model Numbers. Bullet Feet and Flanged feet have a 1" adjustment.

Model Number	Steamer Capacity	Style
Steam PRO™, Stand Selector		
SCA	One	5" Caster
SBU	One	Adjustable Bullet Foot
SFL	One	Adjustable Flange Foot

Model Number	Steamer Capacity	Style
Steam PRO™, Stand Selector		
DCA	Two	5" Caster
DBU	Two	Adjustable Bullet Foot
DFL	Two	Adjustable Flange Foot

